

## 2. DRAFT PARK VISIONS

*The vision describes the long-term desired future condition for a park. It presents a picture of the park if the proposed management direction has been successfully implemented.*

### MOUNT GEOFFREY REGIONAL NATURE PARK

***FOR THE REGIONAL PARK**, the following points are reflective of content contained in the current 1998 park master plan and comments received by the public in the 2014 Mount Geoffrey planning outreach initiative.*

- ❖ Healthy, functioning ecosystems – including coastal bluffs, wetlands and coastal Douglas-fir forests.
- ❖ *Vision statement relating to First Nation cultural values (to be developed).*
- ❖ An extensive trail network for low impact walking, horseback riding and mountain biking in a natural setting.
- ❖ The trail system extends into the adjacent Crown lands and provincial park, creating one large contiguous natural area.
- ❖ The focus is on adaptive management to protect or restore functioning and resilient natural ecosystems.
- ❖ Park management is integrated with adjacent Crown and provincial parklands.
- ❖ The park is maintained through local forces overseen by the Regional Parks Committee with funding and support from the CVRD.

### MOUNT GEOFFREY ESCARPMENT PROVINCIAL PARK

***FOR THE PROVINCIAL PARK**, the following summary is from information provided by the Hornby Island Provincial Parks Committee and is reflective of public opinion as collected through the 2014 Mount Geoffrey planning outreach initiative.*

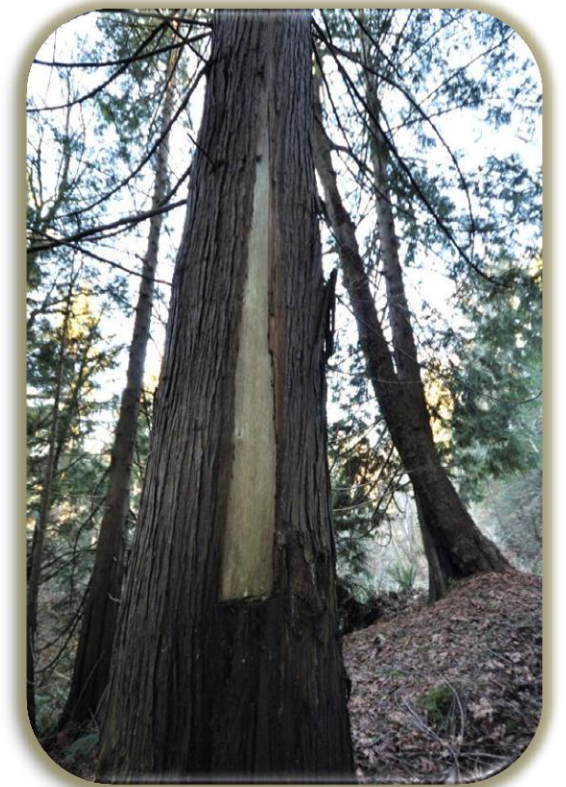
- ★ Healthy, functioning ecosystems – including Coastal bluffs, wetlands and coastal Douglas-fir forests.
- ★ *Vision statement relating to First Nation cultural values (to be developed).*
- ★ *A vision is required for the Leaf House and Ford family homestead area.*
- ★ A small number of scenic trails offer opportunities for low impact cycling and walking in a natural setting.
- ★ The trail system extends into the adjacent regional park and Crown lands, creating an expanded and more diverse recreational experience.
- ★ The focus of management is protection, restoration and maintenance of ecosystems.
- ★ Park management is integrated with adjacent Crown and Regional Park lands, to create a relatively seamless recreational experience and volunteers are welcome to assist in meeting park management objectives.

**PLANNING STAFF WILL BE USING FEEDBACK RECEIVED AT THE OPEN HOUSE TO DRAFT A VISION STATEMENT FOR EACH OF THE PARKS.**

# 3. MOUNT GEOFFREY KEY VALUES

## Mount Geoffrey:

- ❖ Located on southern and central Hornby Island containing Mount Geoffrey Escarpment Provincial Park, Mount Geoffrey Nature Park and a parcel of Crown land protecting 790 hectares or 25% of Hornby Island.
- ❖ Mount Geoffrey parks and Crown lands are among one of the largest contiguous natural areas on the Gulf Islands.
- ❖ *Statement on cultural importance to be developed.*
- ❖ Conserves the rare Coastal Douglas-fir biogeoclimatic zone and its associated ecological and plant communities.
- ❖ Protects habitat for several species at risk.
- ❖ Popular with locals and visitors for year-round recreational opportunities.
- ❖ Includes coastal bluffs, mature forests, wetland networks and a series of hiking and biking trails.
- ❖ Groundwater recharge area for the island.



### Key Ecological Values

- Northern extent of the rare coastal Douglas-fir biogeoclimatic zone.
- Forests of coast Douglas-fir, western redcedar, Garry oak, arbutus and bigleaf maple.
- Wetland networks, coastal bluffs, forested benches and rugged shoreline.
- Rare plant communities.
- Species at risk including the Peregrine Falcon and Northern Red-legged Frog.
- Critical area for rainfall capture to recharge groundwater on the island.

### Key Recreational Values

- Hiking trails.
- Mountain biking trails.
- Equestrian trails.
- Spectacular views to Denman Island, the Beaufort Mountains on Vancouver Island and Georgia Strait.
- Nature appreciation.
- Photography.
- Bird watching and wildlife viewing.

### Key Cultural Values

- *First Nations values... To be developed.*
- Ford family homestead site including farm fields and orchard.
- Architecturally unique Leaf House.
- Opportunities for cultural awareness and education.